



**VIBRANT  
OUTSIDE.  
PEACEFUL  
INSIDE.**



An address like Keshavnagar oozes with good vibes and is dotted by lifestyle destinations. And the design of verve is such that you feel the calmness, once you step in. A rare amalgamation of vibrancy and peace.





The spacious lobby exudes grandeur.....

Making movements easy and comfortable, large lobbies

have been designed. Expect Grandeur in every inch.

---



SHEER  
EXUBERANCE

VIBRANT LIFE,  
EVERY MOMENT.

 **GOODWILL**  
**verve**  
Vibrant outside. Peaceful inside





BE AT THE  
EPICENTRE <sup>OF</sup>  
VIBRANCE

---



To fulfill desires and the urges of every human heart, we present you Verve - Homes that enjoy vibrant neighbourhood. 2, 2.5, and 3 BHK liberating homes in Keshavnagar make it an amalgamation of exuberance and serenity that one should not miss.

---



BE AT THE  
EPICENTRE <sup>OF</sup>  
GRANDEUR







**Experience Grandness &  
Assured Safety at every step  
with 3 Tier Security System**





BE AT THE  
EPICENTRE OF  
CONVENIENCE





## CONVENIENCE IS THE TRU LUXURY

Time has been always valuable but

in today's fast-paced world it's

more precious than everything

else. Life revolves around 'have-to'

things like 'to-do' lists.

But Verve, with its strategic

location will bring a luxury of

convenience.

---

A gateway to the  
SUMPTUOUS LIFE



# Area F3

Fun n' Frolic for the Family!

Rooftop party lounge for everyone to indulge,  
swanky plunge pool and games arena for little munchkins.  
**Family that enjoys together, rocks together!**





**Area F3**  
Rooftop Party Lawn

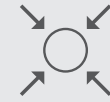
Charming  
&  
CAPTIVATING



**Area F3**  
Plunge Pool

For a calming  
ME TIME

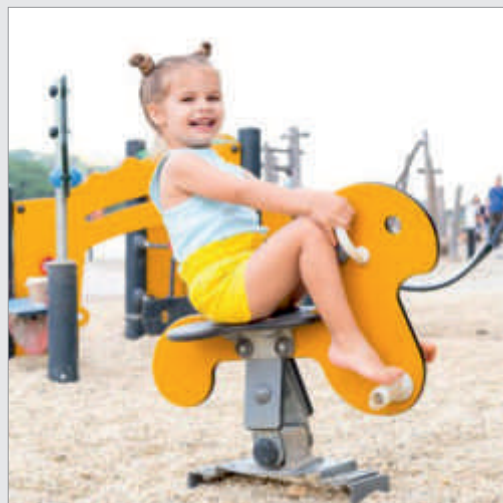
THE  
ARRIVAL  
ZONE



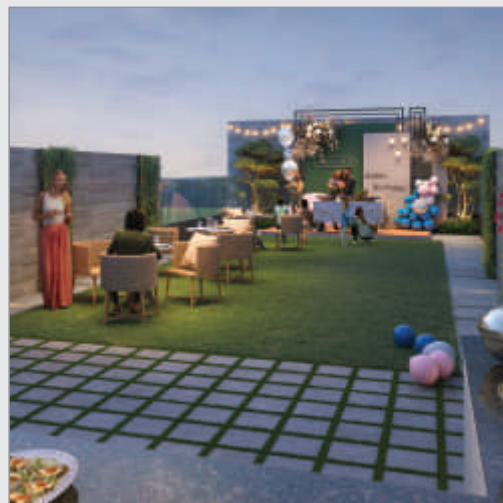
THE  
FITNESS  
ZONE



THE  
PLAY  
ZONE



THE  
RELAXATION  
ZONE



# AMENITIES THAT LIBERATE YOUR DESIRES

A world within itself, Verve brings you an alternative reality. The delightful combination of calm & happening amenities will liberate your desires so that you enjoy all aspects of life to the fullest.







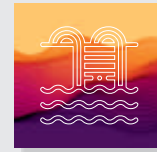
**Area F3**  
Toddlers' Play Area

Cute & CARING

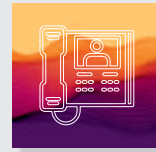
---

# A M E N I T I E S

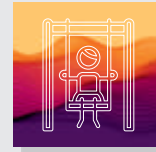
## AMENITIES THAT MAKE LIFE JOYOUS



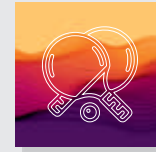
Plunge Pool



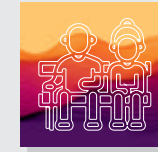
Designer Clubhouse



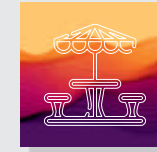
Children's Play Area



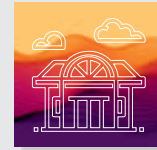
Indoor Games Area



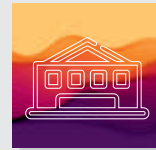
Senior Citizen Sit-Outs



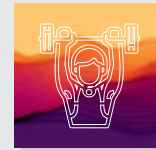
Open-Air Landscaped Sit-Outs



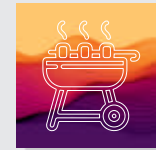
Landscaped Terrace for the Clubhouse



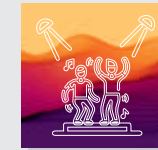
Multipurpose Hall



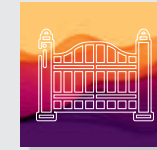
AC Gymnasium



Barbeque Counter with Buffet Area

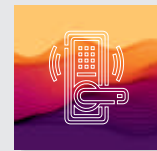


Party Lawn with Stage

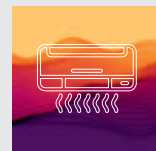


Elegant Entrance Gate

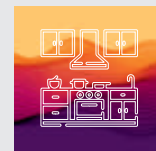
## AMENITIES THAT MAKE LIFE SEAMLESS



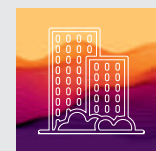
Digital Lock



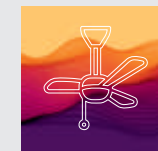
AC in The Master Bedroom



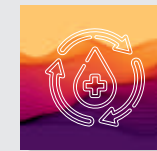
Modular Kitchen with Trolley, Chimney & Cooktop



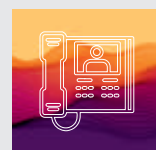
Limited DG Backup in All Flats



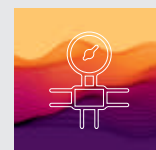
Fans & Led Tube Light in All Flats



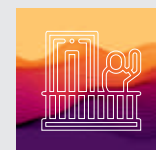
RO Water Purifier



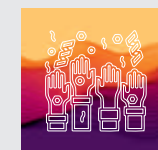
Video Door Phone



Provision For Piped Gas Connection

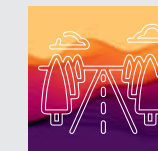


Provision for a Washing Machine & Clothes Hanger in Dry Balcony

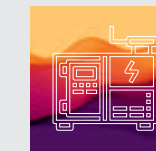


4 Levels of Enjoyment

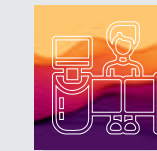
## AMENITIES THAT ASSURE SAFETY



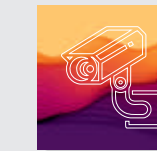
Internal Tremix Concrete Roads



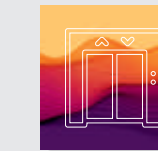
Power Backup for Common Areas



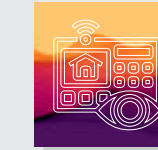
Entrance Gate with Security Cabin



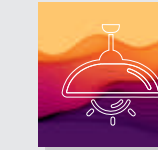
CCTV Cameras in Common Areas



Automatic Gearless Lifts with Power Backup



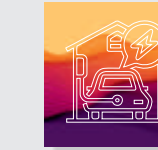
Mobile-Based Security System



LED fixtures for common area

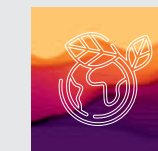


Entrance lobby with access control

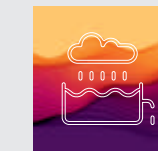


Electric Vehicle charging point provision

## AMENITIES THAT ARE NATURE FRIENDLY



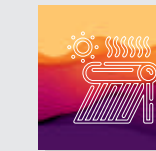
STP Recycled Water for Gardening & Flushing



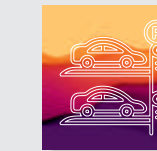
Rainwater Harvesting



Sewage Treatment Plant (STP) as per Statutory Requirements



Central Solar-Heated Water

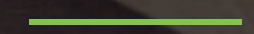


Stack Parking Provision (Optional)





Relax  
AND  
Enjoy





Beautifying the  
KESHAVNAGAR SKYLINE

# CLASS DEFINING SPECIFICATIONS

Top-of-the-line handpicked features and specifications that suit your class and desire for luxury.



## STRUCTURE

- Earthquake-resistant R.C.C. framed structure



## TILES

- 32"x32" double charged vitrified flooring with skirting
- Designer tiles in Terraces/Balcony & Bathroom



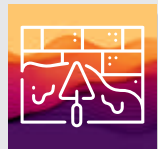
## BRICKWORK

- Lightweight 'AAC' block work internally & externally



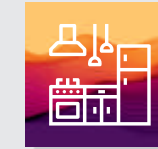
## DOORS

- Decorative laminated hot pressed flush doors with accessories
- Laminated door frame for main door & bedrooms door
- Granite door frame for toilets/bathrooms/WC
- Aluminium powder coated sliding doors for Terrace & Balconies



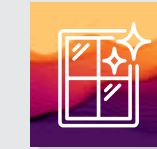
## PLASTER

- External sand-faced cement plaster
- Internal walls & ceiling-sand faced cement tar plaster with gypsum finish & gypsum finished ceiling respectively



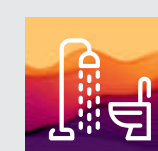
## KITCHEN

- Modular kitchen with granite platform & S.S. sink
- Designer wall tiles up to 600mm above platform
- Provision for exhaust fan
- Provision for piped gas connection



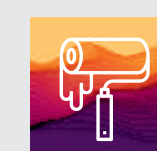
## WINDOWS & RAILING

- 3 track powder coated aluminium windows with mosquito net
- Granite sill for all windows
- M.S. railing for Balcony & Terraces



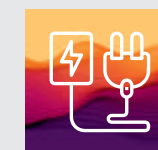
## TOILETS / BATHROOMS / WC

- Designer wall tiles up to lintel level in toilets
- Hot & cold diverter unit in bathroom/toilet
- Branded CP & Sanitary fitting & fixtures
- walls & ceiling - acrylic emulsion paint



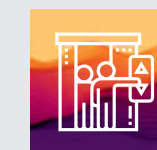
## PAINTING

- Internal walls & ceiling - acrylic emulsion paint
- External walls - Exterior acrylic paint (Apex or equivalent)



## ELECTRICAL

- ISI mark electrical fittings
- Adequate electrical points with concealed copper wiring, Modular switches & MCB
- TV point in living room
- AC point in living & master bedroom
- Limited DG backup in all flats (up to 2.5 amp)



## LIFT

- Automatic high speed lifts with power backup



2 BHK



2.5 BHK



LEGENDS

- A** Entrance
- B** Kitchen
- C** Living Room
- D** Dining Area
- E** Terrace
- F** Bedroom-1
- F1** Master Bedroom
- G** Master Bathroom
- H** Common Bathroom

LEGENDS

- A** Entrance
- B** Kitchen
- C** Living Room
- D** Dining Area
- E** Terrace
- F** Bedroom-1
- F1** Bedroom-2
- F2** Master Bedroom
- G** Master B. Bathroom
- H** Common Bathroom

3 BHK



## LEGENDS

- |                      |                      |                            |                            |
|----------------------|----------------------|----------------------------|----------------------------|
| <b>A</b> Entrance    | <b>D</b> Dining Area | <b>F1</b> Bedroom - 2      | <b>H</b> Attached Bathroom |
| <b>B</b> Kitchen     | <b>E</b> Terrace     | <b>F2</b> Master Bedroom   | <b>I</b> Common Bathroom   |
| <b>C</b> Living Room | <b>F</b> Bedroom - 1 | <b>G</b> Attached Bathroom |                            |



# ELEGANCE IN EVERY INCH

Choose any of the 2, 2.5 and 3 BHK  
homes. Live Grand.

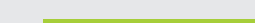


# HEIGHTS OF LUXURY,

# CONVENIENCE & GRANDEUR.

You'll pat your back for choosing Verve as it exceeds your expectations about your home.

Your own domain for you and your loves ones.





# THE UNANIMOUS 'CHOICE' OF KNOWLEDGEABLE PROPERTY BUYERS.



At Choice Group, we offer you an array of possibilities to suit your needs, whether you are moving in your first home or investing in your future with assured high returns. It's not just buildings that we build. With you in mind, we model houses and homes. We build neighborhood and communities with everything you need to live your life to the fullest.

Entire East Pune is dotted with the Choice Group projects where thousands of families are leading a fulfilling life there.

Proving your CHOICE right since 28 years.

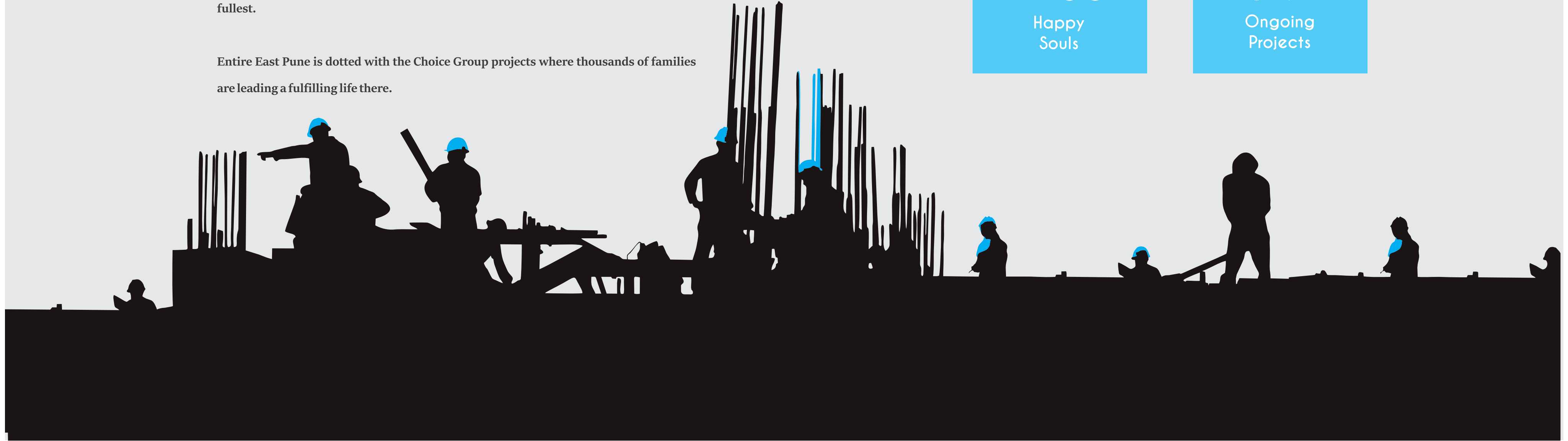


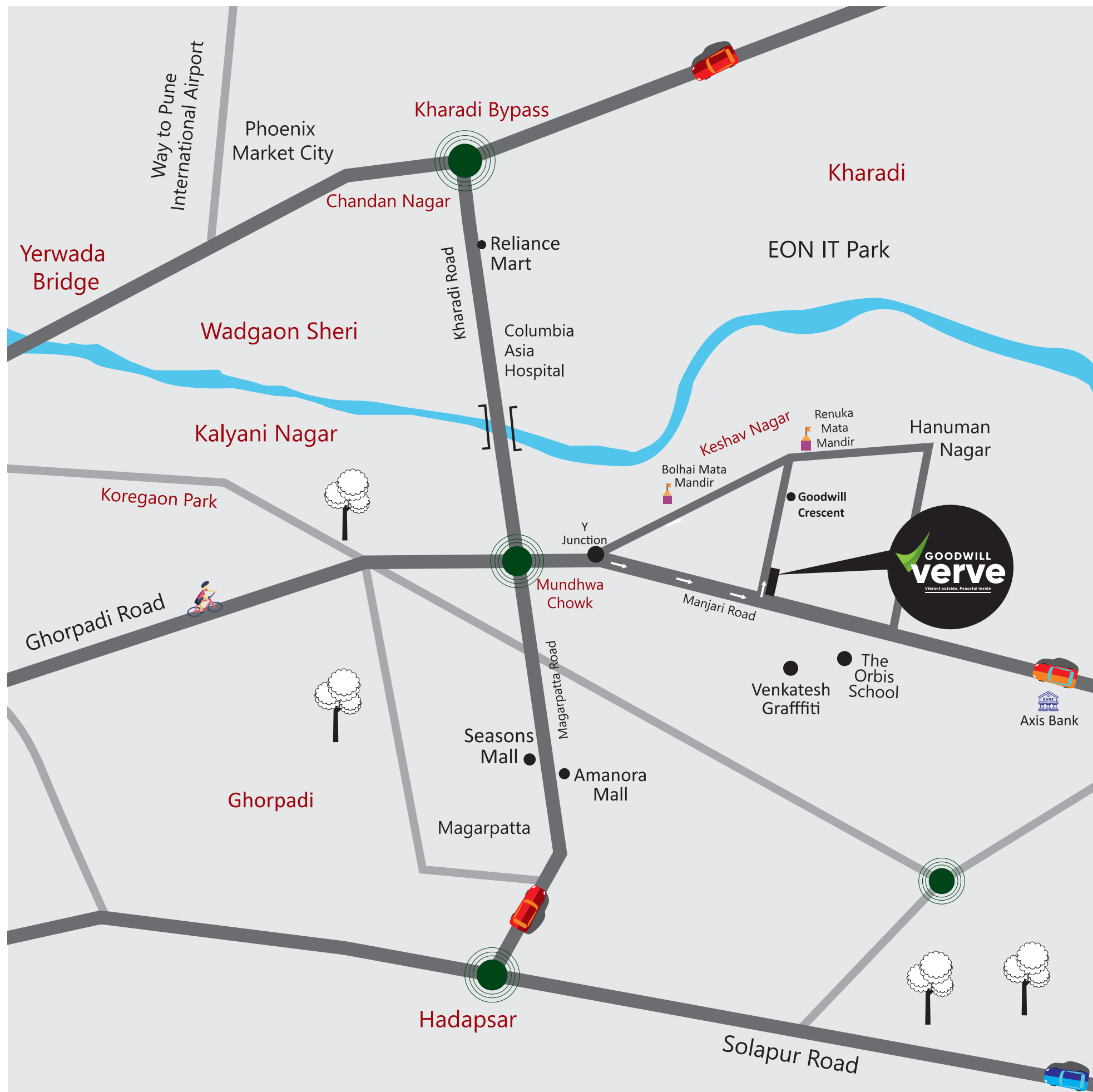
38+  
Residential &  
Commercial

27 LAKH +  
sq.ft.  
Construction  
Completed

11200+  
Happy  
Souls

25 LAKH +  
sq.ft.  
Ongoing  
Projects





## KEY DISTANCES:



### HOSPITALS

Columbia Asia Hospital	3.7 km
Noble Hospital	6 km



### HOTELS

The Westin	5.5 km
Conrad	7.5 km
Novotel	7.8 km



### ENTERTAINMENT

Amanora Mall	3.2 km
Seasons Mall	3.4 km
Phoenix Market City	6.8 km



### RAILWAY STATIONS

Hadapsar Railway Station	2.5 km
Pune Railway Station	9.0 km
Swargate ST Stand	13.0 km



### AIRPORT

Pune Airport	9.5 km
--------------	--------



### IT PARKS

Magarpatta City	4.0 km
EON IT Park, Kharadi	6.0 km
Business Bay, Yerawada	8.4 km



### SCHOOLS

Orbis School	1.0 km
Pawar Public School	2.7 km
Vibgyor High School	4.5 km
The Kalyani School	4.7 km
Symbiosis University	7.8 km

## C R E D I T S

### DESIGNING ARCHITECT

Cubix Architects

### LIASONING ARCHITECT

Sandeep Hardikar  
& Associates

### RCC CONSULTANT

SV & Associates

### LANDSCAPE DESIGNER

Ar. Mahesh Chinchalkar

### 3D VISUALIZATION

Square One

### MEP CONSULTANT

Olectra Consultants

### LEGAL ADVISOR

Adv. Chandrakant Naanekar

### BRAND CONSULTANT

Zest Creative




Project by:



Site Address: Sr.No. 35 & 36, Opp. Venkatesh Graffiti, Manjri Road, Keshav Nagar, Mundhwa, Pune - 411036

E-Mail: [verve@choicegoodwill.com](mailto:verve@choicegoodwill.com) | Web: [www.choicegoodwill.com](http://www.choicegoodwill.com)

 MAHA RERA NO. P52100046076

Corporate Office: Choice Group, Adarsh Colony, Lane No.8, Tingrenagar,  
Vishrantwadi - Airport Road, Pune - 411032

# Call: 7741 911 911



ISO Certified Company

Disclaimer: This brochure is purely conceptual and not a legal offering. Number of floors, flats or units may be revised due to amendment in development control rules. The developers reserve the rights to amend the layout, plans, elevations, specifications and amenities. The furniture layout displayed in the floor plans are indicative in nature and are not included with the actual apartment. The dimensions of the unit as mentioned are from "Bare wall" to "Bare wall". The perspective images shown in this brochure may not be to the scale or may not represent actual facade / elevation. The details of windows, paints, elevation features, landscaping, ground development, trees etc, in this brochure are an artist's impression and might be different from actual construction of building and development. The viewers affirm that he / she has not taken his/ her decision of purchase/booking by viewing these images. The company is not responsible for the action of the viewer's booking / purchasing a unit relying on these images.

Pouch W 10".5 X H 3"

